

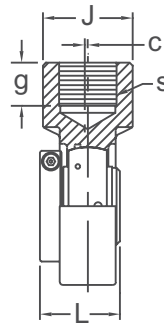
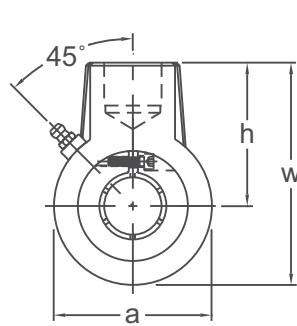


ACCU-LOC® HANGER BEARING UNITS

UEECH 200

NORMAL DUTY

Concentric Locking
52100 Bearing Steel
w/Black Oxide Finish
Ductile Iron Housing
Insert detail-pg.133
Inch and Metric



Shaft Diam. (in.)	AMI Unit #	List Price	Dimensions (in.)								Bearing #	Housing #	Weight (lb.)
			a	w	h	J	s (BSP)	g	L	c			
3/4	UEECH204-12	94.70	2-3/4	3-7/8	2-1/2	1-9/16	3/4-14	3/4	1.299	0	UE204-12	ECH204	2.03
7/8	UEECH205-14	98.00	2-3/4	3-7/8	2-1/2	1-9/16	3/4-14	3/4	1.394	0	UE205-14	ECH205	1.83
15/16	UEECH205-15										UE205-15		
1	UEECH205-16										UE205-16		
1-1/8	UEECH206-18	127.90	3-1/8	4-1/8	2-1/2	1-9/16	3/4-14	3/4	1.567	0	UE206-18	ECH206	2.23
1-3/16	UEECH206-19										UE206-19		
1-1/4	UEECH206-20										UE206-20		
1-1/4	UEECH207-20	157.00	3-5/8	4-9/16	2-3/4	1-9/16	3/4-14	3/4	1.728	0	UE207-20	ECH207	2.97
1-3/8	UEECH207-22										UE207-22		
1-7/16	UEECH207-23										UE207-23		
1-1/2	UEECH208-24	159.30	3-3/4	4-3/4	2-7/8	1-9/16	3/4-14	3/4	1.976	0.079	UE208-24	ECH208	3.42
1-11/16	UEECH209-27	184.10	4-1/4	5-3/8	3-1/4	1-7/8	1-11	13/16	1.976	0.157	UE209-27	ECH209	4.36
1-3/4	UEECH209-28										UE209-28		
1-15/16	UEECH210-31	227.00	4-1/2	5-1/2	3-1/4	1-7/8	1-11	13/16	2.071	0.197	UE210-31	ECH210	4.81
2	UEECH210-32										UE210-32		
2	UEECH211-32	321.80	5-5/8	6-13/16	4	2-23/64	1-1/4-11	1-1/8	2.228	0.343	UE211-32	ECH211	9.61
2-3/16	UEECH211-35										UE211-35		
2-7/16	UEECH212-39	364.40	5-5/8	6-13/16	4	2-23/64	1-1/4-11	1-1/8	2.622	0.343	UE212-39	ECH212	13.14
Dimensions (mm)													
20	UEECH204	97.10	70	99	64	40	3/4-14	19	33.0	0	UE204	ECH204	2.03
25	UEECH205	100.70	70	99	64	40	3/4-14	19	35.4	0	UE205	ECH205	1.85
30	UEECH206	132.50	80	104	64	40	3/4-14	19	39.8	0	UE206	ECH206	2.25
35	UEECH207	159.20	92	116	70	40	3/4-14	19	43.9	0	UE207	ECH207	3.01
40	UEECH208	163.40	96	121	73	40	3/4-14	19	50.2	2.0	UE208	ECH208	3.45
45	UEECH209	191.70	108	136	82	48	1-11	21	50.2	4.0	UE209	ECH209	4.40
50	UEECH210	237.00	114	140	83	48	1-11	21	52.6	5.0	UE210	ECH210	4.86
55	UEECH211	356.50	143	173	101.6	60	1-1/4-11	28.5	56.6	8.7	UE211	ECH211	9.61
60	UEECH212	386.60	143	173	101.6	60	1-1/4-11	28.5	66.6	8.7	UE212	ECH212	13.14

Lubrication fitting tap size for 1" and smaller shaft sizes, 1/4-28 UNF; for all other sizes, 1/8-27 NPT

INTERCHANGES: SCHB-DL