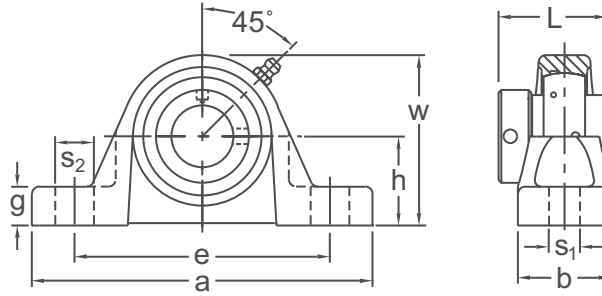




NORMAL DUTY



Eccentric Locking  
Wide Inner Ring  
Cast Iron Housing  
Insert Detail-pg.124  
Inch and Metric

Shaft Diam. (in.)	AMI Unit #	List Price	Dimensions (in.)											Bolt Size (in.)	Bearing #	Housing #	Weight (lb.)
			h	a	e		b	s <sub>1</sub>	s <sub>2</sub>	g	w	L					
					Min.	Max.											
3/4	UGP204-12	54.80	1-5/16	5	3-3/8	4-1/8	1-1/2	1/2	3/4	19/32	2-9/16	1-23/32	3/8	UG204-12	P204T	1.43	
7/8	UGP205-14	62.60	1-7/16	5-1/2	3-3/4	4-1/2	1-1/2	1/2	3/4	5/8	2-3/4	1-3/4	3/8	UG205-14	P205T	1.74	
15/16	UGP205-15													UG205-15			
1	UGP205-16													UG205-16			
1-1/8	UGP206-18	77.90	1-11/16	6-1/2	4-7/16	5-1/16	1-7/8	21/32	13/16	23/32	3-9/32	1-29/32	1/2	UG206-18	P206T	2.87	
1-3/16	UGP206-19													UG206-19			
1-1/4	UGP206-20													UG206-20			
1-1/4	UGP207-20	95.20	1-7/8	6-9/16	4-11/16	5-5/16	1-7/8	21/32	13/16	3/4	3-11/16	2-1/64	1/2	UG207-20	P207T	3.53	
1-3/8	UGP207-22													UG207-22			
1-7/16	UGP207-23													UG207-23			
1-1/2	UGP208-24	107.90	1-15/16	7-1/4	4-7/8	5-7/8	2-1/8	21/32	1	3/4	3-15/16	2-7/32	1/2	UG208-24	P208T	4.41	
1-5/8	UGP209-26													UG209-26			
1-11/16	UGP209-27	116.80	2-1/8	7-1/2	5-3/8	6-1/8	2-1/8	21/32	7/8	25/32	4-1/4	2-7/32	1/2	UG209-27	P209T	5.07	
1-3/4	UGP209-28													UG209-28			
1-7/8	UGP210-30	150.60	2-1/4	8-1/8	5-7/8	6-5/8	2-3/8	25/32	1	7/8	4-1/2	2-15/32	5/8	UG210-30	P210T	5.95	
1-15/16	UGP210-31													UG210-31			
2	UGP210-32													UG210-32			
2	UGP211-32	197.00	2-1/2	8-5/8	6-3/8	7-1/8	2-3/8	25/32	1	7/8	4-31/32	2-13/16	5/8	UG211-32	P211T	7.27	
2-1/8	UGP211-34													UG211-34			
2-3/16	UGP211-35													UG211-35			
2-1/4	UGP212-36	244.20	2-3/4	9-1/2	6-7/8	7-5/8	2-3/4	25/32	1	1	5-7/16	3-1/16	5/8	UG212-36	P212T	10.36	
2-3/8	UGP212-38													UG212-38			
2-7/16	UGP212-39													UG212-39			
Dimensions (mm)																	
20	UGP204	54.80	33.3	127	86	105	38	13	19	15	65	43.7	M10	UG204	P204T	1.43	
25	UGP205	62.60	36.5	140	95	114	38	13	19	16	70	44.4	M10	UG205	P205T	1.74	
30	UGP206	77.90	42.9	165	113	129	48	17	21	18	83	48.4	M14	UG206	P206T	2.87	
35	UGP207	95.20	47.6	167	119	135	48	17	21	19	94	51.1	M14	UG207	P207T	3.53	
40	UGP208	107.90	49.2	184	124	149	54	17	25	19	100	56.3	M14	UG208	P208T	4.41	
45	UGP209	116.80	54	190	137	156	54	17	22	20	108	56.3	M14	UG209	P209T	5.07	
50	UGP210	150.60	57.2	206	149	168	60	20	25	22	114	62.7	M16	UG210	P210T	5.95	
55	UGP211	197.00	63.5	219	162	181	60	20	25	22	126	71.4	M16	UG211	P211T	7.27	
60	UGP212	244.20	69.8	241	175	194	70	20	25	25	138	77.8	M16	UG212	P212T	10.36	

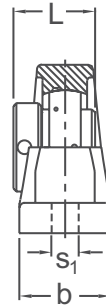
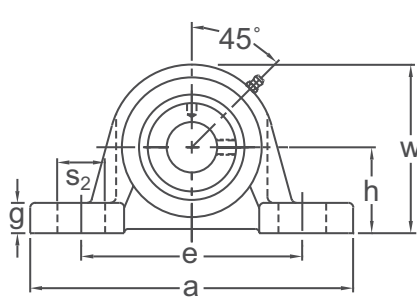
\*Consult factory for availability

Lubrication fitting tap size for 1" and smaller shaft sizes, 1/4-28 UNF; for all other sizes, 1/8-27 NPT

**INTERCHANGES:** VPE-2 P2B-SXR RAS P3Y-N SY-WF UELP RP-E



Eccentric Locking  
Wide Inner Ring  
Cast Iron Housing  
Insert Detail-pg.124  
Inch and Metric

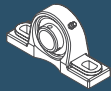


Shaft Diam. (in.)	AMI Unit #	List Price	Dimensions (in.)										Bolt Size (in.)	Bearing #	Housing #	Weight (lb.)
			h	a	e		b	s <sub>1</sub>	s <sub>2</sub>	g	w	L				
					Min.	Max.										
7/8	UGAKH205-14	96.60	1-3/4	6-1/4	4.141	5.109	2.000	0.591	0.984	0.709	3.500	1-3/4	1/2	UG205-14	AKH205	3.37
15/16	UGAKH205-15													UG205-15		
1	UGAKH205-16													UG205-16		
1-1/8	UGAKH206-18	120.90	1-7/8	6-57/64	4.516	5.484	2.250	0.591	0.984	0.709	3.819	1-29/32	1/2	UG206-18	AKH206	4.6
1-3/16	UGAKH206-19													UG206-19		
1-1/4	UGAKH206-20													UG206-20		
1-1/4	UGAKH207-20	133.60	2-1/8	8	4.788	6.150	2.250	0.669	1.181	0.748	4.173	2-1/64	1/2	UG207-20	AKH207	6.08
1-3/8	UGAKH207-22													UG207-22		
1-7/16	UGAKH207-23													UG207-23		
1-1/2	UGAKH208-24	204.00	2-5/16	8-3/4	5.500	6.750	2.598	0.669	1.250	0.787	4.567	2-7/32	5/8	UG208-24	AKH208	7.98
1-5/8	UGAKH209-26	237.00	2-5/16	8-3/4	5.500	6.750	2.598	0.669	1.250	0.787	4.567	2-7/32	5/8	UG209-26	AKH209	7.82
1-11/16	UGAKH209-27													UG209-27		
1-3/4	UGAKH209-28													UG209-28		
1-7/8	UGAKH210-30	265.80	2-1/2	9-1/2	5.918	7.582	2.875	0.669	1.457	0.866	5.079	2-15/32	5/8	UG210-30	AKH210	10.11
1-15/16	UGAKH210-31													UG210-31		
2	UGAKH210-32													UG210-32		
2	UGAKH211-32	322.95	2-3/4	10-1/4	6.425	8.075	3.110	0.984	1.575	1.102	5.591	2-13/16	3/4	UG211-32	AKH211	13.86
2-1/8	UGAKH211-34													UG211-34		
2-3/16	UGAKH211-35													UG211-35		
2-1/4	UGAKH212-36	398.70	3	11-1/4	7.156	9.594	3.250	1.024	1.969	1.102	6.339	3-1/16	3/4	UG212-36	AKH212	17.29
2-3/8	UGAKH212-38													UG212-38		
2-7/16	UGAKH212-39													UG212-39		
Dimensions (mm)																
25	UGAKH205	96.60	44.4	158	105	130	51	15	25	18	89	44.4	M14	UG205	AKH205	3.37
30	UGAKH206	120.90	47.6	175	115	139	57	15	25	18	97	48.4	M14	UG206	AKH206	4.60
35	UGAKH207	133.60	54.0	203	122	156	57	17	30	19	106	51.1	M14	UG207	AKH207	6.08
40	UGAKH208	204.00	58.7	222	140	172	66	17	32	20	116	56.3	M16	UG208	AKH208	7.98
45	UGAKH209	237.00	58.7	222	140	172	66	17	32	20	116	56.3	M16	UG209	AKH209	7.82
50	UGAKH210	265.80	63.5	241	150	193	73	17	37	22	129	62.7	M16	UG210	AKH210	10.11
55	UGAKH211	322.95	69.8	260	163	205	79	25	40	28	142	71.4	M20	UG211	AKH211	13.86
60	UGAKH212	398.70	76.2	286	182	244	82	26	50	28	161	77.8	M20	UG212	AKH212	17.29

\*Consult factory for availability

Lubrication fitting tap size for 1" and smaller shaft sizes, 1/4-28 UNF; for all other sizes, 1/8-27 NPT

**INTERCHANGES: RAKH**

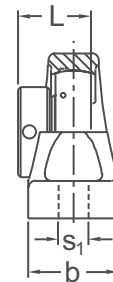
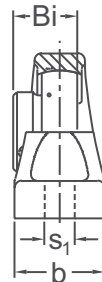
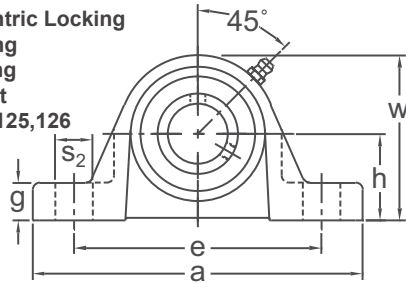


# LOW BASE PILLOW BLOCKS

# BLP / KHLP 200

NORMAL DUTY

Set-Screw/Eccentric Locking  
Narrow Inner Ring  
Cast Iron Housing  
Low Shaft Height  
Insert Detail-pg.125,126  
Inch and Metric



BLP 200 Type  
Set-Screw Locking

KHLP 200 Type  
Eccentric Collar Locking

Shaft Diam. (in.)	AMI Unit # Complete with B 200 Type	List Price	AMI Unit # Complete with KH 200 Type	List Price	Dimensions (in.)											Bolt Size (in.)	Bearing #		Housing #	Weight (lb.)
					h	a	e		b	s1	s2	g	w	Bi	L		B	KH		
							Min.	Max.												
1/2	BLP201-8	42.60	KHLP201-8	43.20	1-1/16	4-3/4	3-1/4	3-3/4	1-1/8	1/2	5/8	1/2	2-3/16	0.866	1-1/8	3/8	B1-8	KH201-8	LP203T	0.90
5/8	BLP202-10		KHLP202-10		1-1/4	5-1/4	3-1/2	4-1/4	1-1/4	1/2	3/4	1/2	2-9/16	0.972	1-7/32	3/8	B2-10	KH202-10	LP204T	1.48
3/4	BLP204-12	42.60	KHLP204-12	43.20	1-1/4	5-1/4	3-1/2	4-1/4	1-1/4	1/2	3/4	1/2	2-9/16	0.972	1-7/32	3/8	B4-12	KH204-12	LP204T	1.48
7/8	BLP205-14	45.20	KHLP205-14	47.10	1-5/16	5-1/2	3-3/4	4-1/2	1-1/2	1/2	3/4	5/8	2-11/16	1.063	1-7/32	3/8	B5-14	KH205-14	LP205T	1.74
15/16	BLP205-15	45.20	KHLP205-15														B5-15	KH205-15		
1	BLP205-16	42.85	KHLP205-16														B5-16	KH205-16		
1-1/16	BLP206-17	63.20	—	66.45	1-9/16	6-1/2	4-1/2	5-1/4	1-5/8	19/32	7/8	11/16	3-3/16	1.193	1-13/32	1/2	B6-17	—	LP206T	2.64
1-1/8	BLP206-18		KHLP206-18														B6-18	KH206-18		
1-3/16	BLP206-19		KHLP206-19														B6-19	KH206-19		
1-1/4	BLP206-20		KHLP206-20														B6-20	KH206-20		
1-1/4	BLP207-20	72.60	KHLP207-20	80.00	1-13/16	7	5	5-3/4	1-7/8	19/32	7/8	3/4	3-11/16	1.295	1-17/32	1/2	B7-20	KH207-20	LP207T	4.21
1-5/16	BLP207-21		KHLP207-21														B7-21	KH207-21		
1-3/8	BLP207-22		KHLP207-22														B7-22	KH207-22		
1-7/16	BLP207-23		KHLP207-23														B7-23	KH207-23		
1-1/2	BLP208-24		101.35														KHLP208-24	91.20		
1-5/8	—	—	KHLP209-26	103.65	2-1/16	7-3/4	5-1/2	6-1/2	2-1/8	19/32	1	13/16	4-3/16	—	1-23/32	1/2	—	KH209-26	LP209T	5.24
1-11/16	—	—	KHLP209-27														B8-24	KH208-24		
1-3/4	—	—	KHLP209-28														—	KH209-28		
1-7/8	—	—	KHLP210-30	119.40	2-3/16	8-3/8	6	7	2-1/4	19/32	1	7/8	4-7/16	—	1-23/32	1/2	—	KH210-30	LP210T	6.32
1-15/16	—	—	KHLP210-31														—	KH210-31		
2	—	—	KHLP211-32	160.10	2-7/16	9-1/4	6-5/8	7-5/8	2-1/2	3/4	1-1/8	1	4-15/16	—	1-29/32	5/8	—	KH211-32	LP211T	8.62
2-3/16	—	—	KHLP211-35														—	KH211-35		
Dimensions (mm)																				
12	BLP201	42.60	KHLP201	43.20	27	121	83	95	29	12	16	13	56	22	28.6	M10	B1	KH201	LP203T	0.90
15	BLP202		KHLP202														B2	KH202		
17	BLP203		KHLP203														B3	KH203		
20	BLP204	42.60	KHLP204	43.20	31.8	133	89	108	32	12	19	13	65	24.7	31	M10	B4	KH204	LP204T	1.48
25	BLP205	45.20	KHLP205	47.10	33.3	140	95	114	38	12	19	16	68	27	31	M10	B5	KH205	LP205T	1.74
30	BLP206	63.20	KHLP206	66.45	39.7	165	114	133	41	15	22	17	81	30.3	35.7	M12	B6	KH206	LP206T	2.64
35	BLP207	72.60	KHLP207	80.00	46	178	127	146	48	15	22	19	94	32.9	38.9	M12	B7	KH207	LP207T	4.21
40	BLP208	101.35	KHLP208	91.20	49.2	184	133	152	51	15	22	21	100	35.5	43.7	M12	B8	KH208	LP208T	4.85
45	—	—	KHLP209	103.65	52.4	197	140	165	54	15	25	21	106	—	43.7	—	—	KH209	LP209T	5.24
50	—	—	KHLP210	119.40	55.6	213	152	178	57	15	25	22	113	—	43.7	M12	—	KH210	LP210T	6.32
55	—	—	KHLP211	160.10	61.9	235	168	194	64	19	29	25	125	—	48.7	M16	—	KH211	LP211T	8.62

Lubrication fitting tap size for 1" and smaller shaft sizes, 1/4-28 UNF; for all other sizes, 1/8-27 NPT

**INTERCHANGES: VPLE-1 P2B-SXVB VAK PL3W-U SYH-FM AELPL VPL**

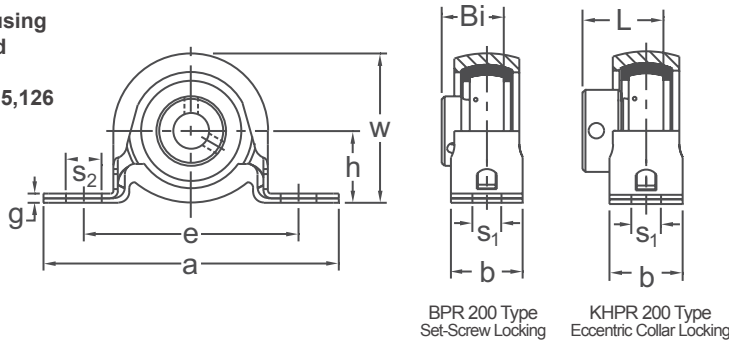


# PRESSED STEEL PILLOW BLOCKS

# BPR / KHPR 200

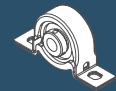
NORMAL DUTY

Set-Screw/Eccentric Locking  
 Narrow Inner Ring  
 Pressed Steel Housing  
 Rubber Cushioned  
 Non-Relube  
 Insert Detail-pg.125,126  
 Inch and Metric

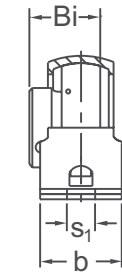
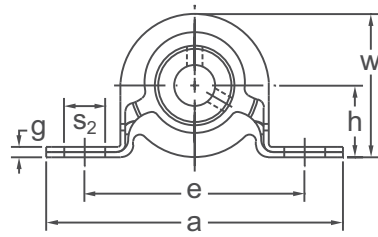


Shaft Diam. (in.)	AMI Unit # Complete with B 200 Type	List Price	AMI Unit # Complete with KH 200 Type	List Price	Dimensions (in.)											Stamping Load Limit (lbs.)	Bolt Size (in.)	Bearing #		Housing #	Rubber Ring #	Weight (lb.)		
					h	a	e		b	s <sub>1</sub>	s <sub>2</sub>	g	w	Bi	L			B	KH					
							Min.	Max.																
1/2	BPR1-8	34.70	KHPR201-8	36.10	1	4-1/8	2-7/8	3-1/8	1	13/32	1/2	1/8	2-1/16	0.866	1-1/8	350	3/8	B1-8	KH201-8	PP4	R4	0.46		
5/8	BPR2-10		KHPR202-10		3-1/8	1-1/8	13/32	9/16	5/32	2-7/32	0.972	1-7/32	400	3/8	B2-10			KH202-10	0.44					
3/4	BPR4-12	39.00	KHPR204-12	37.60	1-1/8	4-1/2	3-3/16	3-9/16	1-1/8	13/32	9/16	5/32	2-7/32	0.972	1-7/32	400	3/8	B4-12	KH204-12	PP5	R5	0.53		
7/8	BPR5-14	41.80	KHPR205-14	41.80	1-5/16	4-7/8	3-9/16	3-15/16	1-1/4	13/32	9/16	5/32	2-5/8	1.063	1-7/32	600	3/8	B5-14	KH205-14	PP6	R6	0.77		
15/16	BPR5-15		KHPR205-15		3-9/16	3-15/16	1-1/4	13/32	9/16	5/32	2-5/8	1.063	1-7/32	B5-15	KH205-15									
1	BPR5-16		KHPR205-16		3-9/16	3-15/16	1-1/4	13/32	9/16	5/32	2-5/8	1.063	1-7/32	B5-16	KH205-16									
1-1/16	BPR6-17	51.85	—	56.70	1-9/16	5-3/4	4	4-1/2	1-5/16	17/32	3/4	3/16	3-1/8	1.193	1-13/32	800	1/2	B6-17	—	PP7	R7	1.17		
1-1/8	BPR6-18		KHPR206-18		4	4-1/2	1-5/16	17/32	3/4	3/16	3-1/8	1.193	1-13/32	B6-18	KH206-18									
1-3/16	BPR6-19		KHPR206-19		4	4-1/2	1-5/16	17/32	3/4	3/16	3-1/8	1.193	1-13/32	B6-19	KH206-19									
1-1/4	BPR6-20		KHPR206-20		4	4-1/2	1-5/16	17/32	3/4	3/16	3-1/8	1.193	1-13/32	B6-20	KH206-20									
Dimensions (mm)																								
12	BPR1	37.80	KHPR201	36.10	25.4	104.8	73	79	25.4	10.3	12.7	3.2	52.4	22	28.6	350	M10	B1	KH201	PP4	R4	0.47		
15	BPR2		KHPR202		28.6	114.3	81	91	28.6	10.3	14.3	4	56.4	24.7	31			400	M10			B2	KH202	0.45
17	BPR3		KHPR203		28.6	114.3	81	91	28.6	10.3	14.3	4	56.4	24.7	31			400	M10			B3	KH203	0.42
20	BPR4	39.00	KHPR204	39.60	28.6	114.3	81	91	28.6	10.3	14.3	4	56.4	24.7	31	400	M10	B4	KH204	PP5	R5	0.54		
25	BPR5	41.80	KHPR205	41.80	33.3	123.8	91	100	31.8	10.3	14.3	4	66.7	27	31	600	M10	B5	KH205	PP6	R6	0.78		
30	BPR6	51.85	KHPR206	56.70	39.7	146.1	102	114	33.3	13.5	19.1	4.6	79.4	30.3	35.7	800	M12	B6	KH206	PP7	R7	1.18		

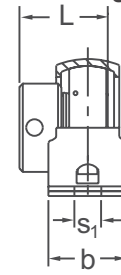
**INTERCHANGES: SSRPS ASRPP SSRPE RPB SR-FM AELRPP LRP**



NORMAL DUTY



BPP 200 Type  
Set-Screw Locking



KHPP 200 Type  
Eccentric Collar Locking

Set-Screw/Eccentric Locking  
Narrow Inner Ring  
Pressed Steel Housing  
Non-Relube  
Insert Detail-pg.125,126  
Inch and Metric

Shaft Diam. (in.)	AMI Unit # Complete with B 200 Type	List Price	AMI Unit # Complete with KH 200 Type	List Price	Dimensions (in.)											Stamping Load Limit (lbs.)	Bolt Size (in.)	Bearing #		Housing #	Weight (lb.)
					h	a	e		b	s <sub>1</sub>	s <sub>2</sub>	g	w	Bi	L			B	KH		
							Min.	Max.													
1/2	BPP1-8	36.75	KHPP201-8	38.15	7/8	3-5/8	2-1/2	2-7/8	1	11/32	1/2	1/8	1-3/4	0.866	1-1/8	300	5/16	B1-8	KH201-8	PP3	0.39
5/8	BPP2-10		KHPP202-10		3-5/8	2-7/8	1	13/32	1/2	1/8	2-1/16	0.972	1-7/32	350	3/8	B2-10	KH202-10				
3/4	BPP4-12	37.25	KHPP204-12	38.65	1	4-1/8	2-7/8	3-1/8	1	13/32	1/2	1/8	2-1/16	0.972	1-7/32	350	3/8	B4-12	KH204-12	PP4	0.55
7/8	BPP5-14	38.00	KHPP205-14	39.90	1-1/8	4-1/2	3-3/16	3-9/16	1-1/8	13/32	9/16	5/32	2-7/32	1.063	1-7/32	400	3/8	B5-14	KH205-14	PP5	0.73
15/16	BPP5-15		KHPP205-15															B5-15	KH205-15		
1	BPP5-16		KHPP205-16															B5-16	KH205-16		
1-1/16	BPP6-17	49.00	—	52.25	1-5/16	4-7/8	3-9/16	3-15/16	1-1/4	13/32	9/16	5/32	2-5/8	1.193	1-13/32	600	3/8	B6-17	—	PP6	1.06
1-1/8	BPP6-18		KHPP206-18															B6-18	KH206-18		
1-3/16	BPP6-19		KHPP206-19															B6-19	KH206-19		
1-1/4	BPP6-20		KHPP206-20															B6-20	KH206-20		
1-1/4	BPP7-20	61.45	KHPP207-20	68.85	1-9/16	5-3/4	4	4-1/2	1-5/16	17/32	3/4	3/16	3-1/8	1.295	1-17/32	800	1/2	B7-20	KH207-20	PP7	1.58
1-5/16	BPP7-21		KHPP207-21															B7-21	KH207-21		
1-3/8	BPP7-22		KHPP207-22															B7-22	KH207-22		
1-7/16	BPP7-23		KHPP207-23															B7-23	KH207-23		
Dimensions (mm)																					
12	BPP1	36.75	KHPP201	38.15	22.2	92.1	64	73	25.4	8.7	12.7	3.2	44.5	22	28.6	300	M8	B1	KH201	PP3	0.39
15	BPP2		KHPP202															B2	KH202		
17	BPP3		KHPP203															B3	KH203		
20	BPP4	37.25	KHPP204	38.65	25.4	104.8	73	79	25.4	10.3	12.7	3.2	52.4	24.7	31	350		B4	KH204	PP4	0.55
25	BPP5	38.00	KHPP205	39.90	28.6	114.3	81	91	28.6	10.3	14.3	4	56.4	27	31	400	M10	B5	KH205	PP5	0.73
30	BPP6	49.00	KHPP206	52.25	33.3	123.8	91	100	31.8	10.3	14.3	4	66.7	30.3	35.7	600		B6	KH206	PP6	1.06
35	BPP7	61.45	KHPP207	68.85	39.7	146.1	102	114	33.3	13.5	19.1	4.6	79.4	32.9	38.9	800	M12	B7	KH207	PP7	1.58

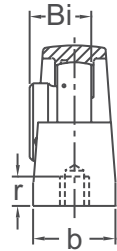
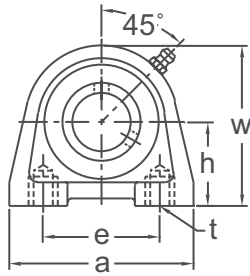
INTERCHANGES: SSPS P2B-SL PS25 ASPP SSP SSPE P2B-SLX PB S-FM AELPP SSP-E

# BSHE / KHSHE / UCSHE / UGSHE 200

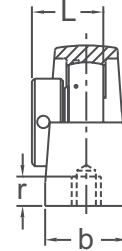
# TAPPED BASE PILLOW BLOCKS



NORMAL DUTY



BSHE 200 Type  
Set-Screw Locking



KHSHE 200 Type  
Eccentric Collar Locking

**Set-Screw/Eccentric Locking  
Narrow Inner Ring  
Cast Iron Housing  
Insert Detail-pg.125-126  
Inch and Metric**

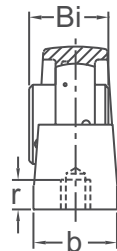
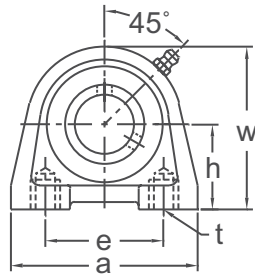
Shaft Diam. (In.)	AMI Unit # Complete with B 200 Type	List Price	AMI Unit # Complete with KH 200 Type	List Price	Dimensions (in.)								Bolt Hole Thread t (mm)	Bearing #		Housing #	Weight (lb.)
					h	a	e	b	r	w	Bi	L		B	KH		
3/4	BSHE204-12	91.85	KHSHE204-12	93.50	1.311	2.756	2.000	1.260	0.393	2.520	0.972	1-7/32	M8	B4-12	KH204-12	SHE04	0.80
7/8	BSHE205-14	106.95	KHSHE205-14	110.00	1.437	3.150	2.000	1.417	0.492	2.756	1.063	1-7/32	M10	B5-14	KH205-14	SHE05	1.20
15/16	BSHE205-15		B5-15											KH205-15			
1	BSHE205-16		B5-16											KH205-16			
1-1/16	BSHE206-17	126.50	—	131.30	1.689	3.858	3.000	1.575	0.492	3.228	1.193	1-13/32	M10	B6-17	—	SHE06	1.80
1-1/8	BSHE206-18		B6-18											KH206-18			
1-3/16	BSHE206-19		B6-19											KH206-19			
1-1/4	BSHE206-20		B6-20											KH206-20			
1-1/4	BSHE207-20	167.20	KHSHE207-20	176.70	1.874	4.331	3.252	1.772	0.492	3.661	1.295	1-17/32	M10	B7-20	KH207-20	SHE07	3.00
1-5/16	BSHE207-21		B7-21											KH207-21			
1-3/8	BSHE207-22		B7-22											KH207-22			
1-7/16	BSHE207-23		B7-23											KH207-23			
1-1/2	BSHE208-24	207.60	KHSHE208-24	199.90	1.937	4.567	3.500	1.890	0.591	3.898	1.398	1-23/32	M12	B8-24	KH208-24	SHE08	3.40
1-5/8	—	—	KHSHE209-26	220.80	2.126	4.724	3.752	1.890	0.591	4.213	—	1-23/32	M12	—	KH209-26	SHE09	4.00
1-11/16			KHSHE209-27											KH209-27			
1-3/4			KHSHE209-28											KH209-28			
1-7/8	—	—	KHSHE210-30	257.45	2.252	5.315	4.000	2.087	0.787	4.528	—	1-23/32	M16	—	KH210-30	SHE10	4.80
1-15/16			KHSHE210-31											KH210-31			
2	—	—	KHSHE211-32	290.70	2.520	5.906	4.646	2.362	0.787	4.921	—	1-29/32	M16	—	KH211-32	SHE11	6.50
2-1/8			KHSHE211-34											KH211-34			
2-3/16	—	—	KHSHE211-35	—	—	—	—	—	—	—	—	—	—	—	KH211-35	—	—

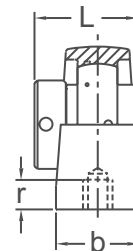
Dimensions (mm)																	
Shaft Diam. (mm)	AMI Unit # Complete with UC 200 Type	List Price	AMI Unit # Complete with UG 200 Type	List Price	h	a	e	b	r	w	Bi	L	Bolt Hole Thread t (mm)	Bearing # UC	Bearing # UG	Housing #	Weight (lb.)
20	BSHE204	91.85	KHSHE204	93.50	33.3	70	50.8	32	10.0	64	24.7	31.0	M8	B4	KH204	SHE04	0.80
25	BSHE205	106.95	KHSHE205	110.00	36.5	80	50.8	36	12.5	70	27.0	31.0	M10	B5	KH205	SHE05	1.20
30	BSHE206	126.50	KHSHE206	131.30	42.9	98	76.2	40	12.5	82	30.3	35.7	M10	B6	KH206	SHE06	1.80
35	BSHE207	167.20	KHSHE207	176.70	47.6	110	82.6	45	12.5	93	32.9	38.9	M10	B7	KH207	SHE07	2.80
40	BSHE208	207.60	KHSHE208	199.90	49.2	116	88.9	48	15.0	99	35.5	43.7	M12	B8	KH208	SHE08	3.40
45	—	—	KHSHE209	220.80	54.0	120	95.3	48	15.0	107	—	43.7	M12	—	KH209	SHE09	4.00
50	—	—	KHSHE210	257.45	57.2	135	101.6	53	20.0	115	—	43.7	M16	—	KH210	SHE10	4.60
55	—	—	KHSHE211	290.70	64.0	150	118.0	60	20.0	125	—	48.7	M16	—	KH211	SHE11	6.50

Lubrication fitting tap size for 1" and smaller shaft sizes, 1/4-28 UNF; for all other sizes, 1/8-27 NPT

**INTERCHANGES: PSHE PSHEY**



UCSHE 200 Type  
Set-Screw Locking



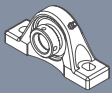
UGSHE 200 Type  
Eccentric Collar Locking

**Set-Screw/Eccentric Locking  
Wide Inner Ring  
Cast Iron Housing  
Insert Detail-pg.113,115  
Metric**

Shaft Diam. (mm)	AMI Unit # Complete with UC 200 Type	List Price	AMI Unit # Complete with UG 200 Type	List Price	Dimensions (mm)								Bolt Hole Thread t (mm)	Bearing #		Housing #	Weight (lb.)
					h	a	e	b	r	w	Bi	L		UC	UG		
20	UCSHE204	93.75	UGSHE204	98.50	33.3	70	50.8	32	10.0	64	31.0	43.7	M8	UC204	UG204	SHE04	1.00
25	UCSHE205	110.75	UGSHE205	121.30	36.5	80	50.8	36	12.5	70	34.0	44.4	M10	UC205	UG205	SHE05	1.40
30	UCSHE206	128.25	UGSHE206	140.40	42.9	98	76.2	40	12.5	82	38.1	48.4	M10	UC206	UG206	SHE06	2.00
35	UCSHE207	170.05	UGSHE207	187.60	47.6	110	82.6	45	12.5	93	42.9	51.1	M10	UC207	UG207	SHE07	3.20
40	UCSHE208	195.65	UGSHE208	213.60	49.2	116	88.9	48	15.0	99	49.2	56.3	M12	UC208	UG208	SHE08	3.80
45	UCSHE209	213.95	UGSHE209	233.50	54.0	120	95.3	48	15.0	107	49.2	56.3	M12	UC209	UG209	SHE09	4.40
50	UCSHE210	253.25	UGSHE210	265.85	57.2	135	101.6	53	20.0	115	51.6	62.7	M16	UC210	UG210	SHE10	5.40
55	UCSHE211	282.85	UGSHE211	305.70	64.0	150	118.0	60	20.0	125	55.6	71.4	M16	UC211	UG211	SHE11	7.20
60	UCSHE212	367.40	UGSHE212	318.95	69.9	150	118.0	61	20.0	140	65.1	77.8	M16	UC212	UG212	SHE12	9.80

Lubrication fitting tap size for 25mm and smaller shaft sizes, 1/4-28 UNF; for all other sizes, 1/8-27 NPT

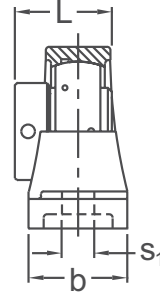
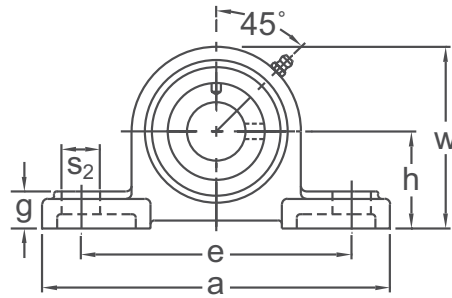
**INTERCHANGES: RSHE RSHEY**



PILLOW BLOCKS

UGP 300

Eccentric Locking  
Wide Inner Ring  
Cast Iron Housing  
Insert detail-pg.135  
Inch and Metric



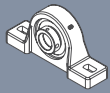
Shaft Diam (in.)	AMI Unit #	List Price	Dimensions (in.)										Bolt Size (in.)	Bearing #	Housing #	Weight (lb.)
			h	a	e		b	s <sub>1</sub>	s <sub>2</sub>	g	w	L				
					Min.	Max.										
1-7/16	UGP307-23	209.10	2-13/64	8-1/4	5-3/4	6-3/4	2-1/4	21/32	1	13/16	4-1/8	2.031	1/2	UG307-23	P307	6.13
1-1/2	UGP308-24	316.50	2-23/64	8-11/16	6-3/16	7-5/16	2-3/8	21/32	1-1/16	29/32	4-9/16	2.248	1/2	UG308-24	P308	7.63
1-11/16	UGP309-27	338.10	2-41/64	9-5/8	6-15/16	8-1/16	2-5/8	25/32	1-3/16	1	5-1/32	2.311	5/8	UG309-27	P309	10.36
1-15/16	UGP310-31	398.00	2-61/64	10-13/16	7-5/8	9-1/8	3-1/16	25/32	1-3/8	1-3/16	5-5/8	2.622	5/8	UG310-31	P310	14.30
2-3/16	UGP311-35	494.50	3-5/32	12-3/16	8-3/8	10-1/8	3-1/8	25/32	1-1/2	1-7/32	6-1/16	2.874	5/8	UG311-35	P311	17.53
2-7/16	UGP312-39	555.15	3-11/32	13-5/32	9-1/8	10-5/8	3-3/8	1	1-1/2	1-27/64	6-1/2	3.126	3/4	UG312-39	P312	20.98
2-11/16	UGP314-43	818.70	3-47/64	14-3/16	10-5/16	11-11/16	3-1/2	1-1/16	1-9/16	1-21/32	7-3/8	3.626	7/8	UG314-43	P314	26.47
2-15/16 3	UGP315-47 UGP315-48	861.85	3-15/16	15-5/64	10-11/16	12-1/16	3-7/8	1-1/16	1-9/16	1-37/64	7-59/64	3.937	7/8	UG315-47 UG315-48	P315	32.17
Dimensions (mm)																
45	UGP309	338.10	67	245	176	205	67	20	30	26	128	58.7	M16	UG309	P309	10.36
50	UGP310	398.00	75	275	194	232	78	20	35	30	143	66.6		UG310	P310	14.30
55	UGP311	494.50	80	310	213	257	80	20	38	31	154	73.0		UG311	P311	17.53
60	UGP312	555.15	85	334	232	270	85	25	38	36	165	79.4	M20	UG312	P312	20.98
70	UGP314	818.70	95	360	262	297	90	27	40	42	187	92.1	M22	UG314	P314	26.47
75	UGP315	861.85	100	383	272	306	100	27	40	40	201	100.0	M22	UG315	P315	32.17
90	UGP318	1246.70	118	430	310	350	110	33	43	50	235	115.9	M27	UG318	P318	50.00

Lubrication fitting tap size 1/8-27 NPT

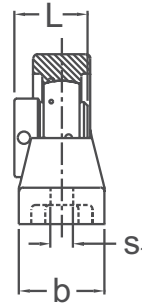
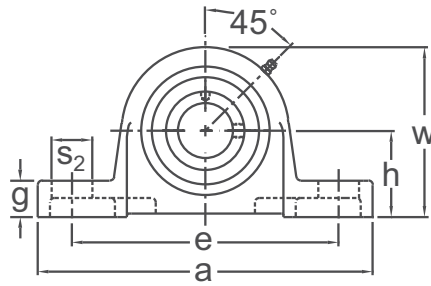
INTERCHANGES: UELP3

HEAVY DUTY





Eccentric Locking  
Wide Inner Ring  
Cast Iron Housing  
Insert detail-pg.135  
Inch and Metric



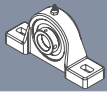
Shaft Diam (in.)	AMI Unit #	List Price	Dimensions (in.)										Bolt Size (in.)	Bearing #	Housing #	Weight (lb.)
			h	a	e		b	s <sub>1</sub>	s <sub>2</sub>	g	w	L				
					Min.	Max.										
1-7/16	UGPU307-23	298.00	2-3/8	9-1/4	6-47/64	7-63/64	2.362	0.625	1.125	1	4.685	2.031	9/16	UG307-23	P-U307	7.84
1-11/16	UGPU309-27	414.80	2-7/8	10-1/4	7-5/8	8-7/8	3.000	0.625	1.125	1-5/16	5.625	2.311	9/16	UG309-27	P-U309	12.72
1-15/16	UGPU310-31	496.10	3-1/8	11-9/64	8-17/64	9-33/64	3.150	0.625	1.125	1-3/8	6.219	2.622	9/16	UG310-31	P-U310	16.66
2-3/16	UGPU311-35	635.40	3-1/2	12-41/64	9-49/64	10-49/64	3.386	0.787	1.250	1-1/2	6.811	2.874	3/4	UG311-35	P-U311	21.08
2-7/16	UGPU312-39	809.10	3-5/8	13-3/4	10-5/8	11-7/8	3.500	0.787	1.375	1-5/8	7.197	3.126	3/4	UG312-39	P-U312	30.20
2-11/16	UGPU314-43	1167.60	4	14-5/8	11-5/64	12-35/64	3.750	1.024	1.614	1-3/4	7.938	3.626	7/8	UG314-43	P-U314	34.76
2-15/16 3	UGPU315-47 UGPU315-48	1303.80	4-1/4	15-1/8	11-1/4	12-3/4	4.000	1.024	1.654	1-3/4	8.295	3.937	7/8	UG315-47 UG315-48	P-U315	39.32
Dimensions (mm)																
45	UGPU309	414.80	73.0	261	194	225	76	16	28.5	33.3	143.0	58.7	M14	UG309	P-U309	10.36
50	UGPU310	496.10	79.4	283	210	242	80	16	28.5	35	158.0	66.6	M14	UG310	P-U310	14.30
55	UGPU311	635.40	88.9	321	248	273	86	20	32	38	173.0	73.0	M18	UG311	P-U311	17.53
60	UGPU312	809.10	92.1	349.2	270	302	88.9	20	35	41.3	182.8	79.4	M18	UG312	P-U312	20.98
70	UGPU314	1167.60	101.6	371.5	281	319	95.2	26	41	44.4	201.6	92.1	M24	UG314	P-U314	26.47
75	UGPU315	1303.80	108.0	384.2	286	324	101.8	26	42	44.4	210.7	100.0	M24	UG315	P-U315	32.17

Lubrication fitting tap size 1/8-27 NPT

INTERCHANGES: P-Y3

HEAVY DUTY

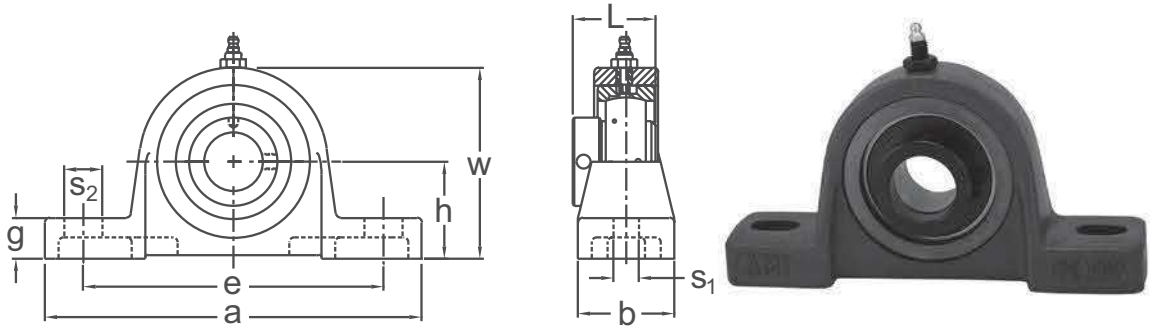




# EXPANSION PILLOW BLOCKS

# UGPE-U 300

Eccentric Locking  
Wide Inner Ring  
Cast Iron Housing  
Expansion Type  
Insert detail-pg.135  
Inch and Metric

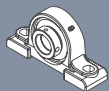


Shaft Diam (in.)	AMI Unit #	List Price	Dimensions (in.)										Bolt Size (in.)	Bearing #	Housing #	Weight (lb.)
			h	a	e		b	s <sub>1</sub>	s <sub>2</sub>	g	w	L				
					Min.	Max.										
1-7/16	UGPEU307-23	463.10	2-3/8	9-1/4	6-47/64	7-63/64	2.362	0.625	1.125	1	4.685	2.031	9/16	UG207-23	PE-U307	6.13
1-11/16	UGPEU309-27	582.00	2-7/8	10-1/4	7-5/8	8-7/8	3.000	0.625	1.125	1-5/16	5.625	2.311	9/16	UG309-27	PE-U309	10.36
1-15/16	UGPEU310-31	695.60	3-1/8	11-9/64	8-17/64	9-33/64	3.150	0.625	1.125	1-3/8	6.219	2.622	9/16	UG310-31	PE-U310	14.30
2-3/16	UGPEU311-35	873.00	3-1/2	12-41/64	9-49/64	10-49/64	3.386	0.787	1.250	1-1/2	6.811	2.874	3/4	UG311-35	PE-U311	17.53
2-7/16	UGPEU312-39	1036.40	3-5/8	13-3/4	10-5/8	11-7/8	3.500	0.787	1.375	1-5/8	7.197	3.126	3/4	UG312-39	PE-U312	20.98
2-11/16	UGPEU314-43	1314.50	4	14-5/8	11-5/64	12-35/64	3.750	1.024	1.614	1-3/4	7.938	3.626	7/8	UG314-43	PE-U314	26.47
2-15/16 3	UGPEU315-47 UGPEU315-48	1645.90	4-1/4	15-1/8	11-1/4	12-3/4	4.000	1.024	1.654	1-3/4	8.295	3.937	7/8	UG315-47 UG315-48	PE-U315	32.17
Dimensions (mm)																
45	UGPEU309	582.00	73.0	261	194	225	76	16	28.5	33.3	143.0	58.7	M14	UG309	PE-U309	10.36
50	UGPEU310	695.60	79.4	283	210	242	80	16	28.5	35	158.0	66.6	M14	UG310	PE-U310	14.30
55	UGPEU311	873.00	88.9	321	248	273	86	20	32	38	173.0	73.0	M18	UG311	PE-U311	17.53
60	UGPEU312	1036.40	92.1	349.2	270	302	88.9	20	35	41.3	182.8	79.4	M18	UG312	PE-U312	20.98
70	UGPEU314	1314.50	101.6	371.5	281	319	95.2	26	41	44.4	201.6	92.1	M24	UG314	PE-U314	26.47
75	UGPEU315	1645.90	108.0	384.2	286	324	101.8	26	42	44.4	210.7	100.0	M24	UG315	PE-U315	32.17

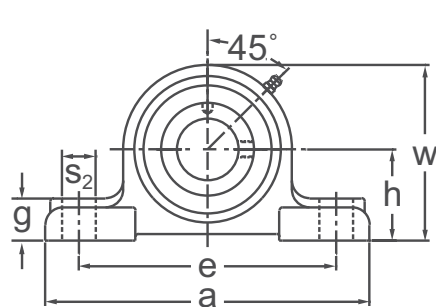
Lubrication fitting tap size 1/8-27 NPT

**INTERCHANGES: PE-Y3**

HEAVY DUTY



Eccentric Locking  
Wide Inner Ring  
Cast Iron Housing  
Insert detail-pg.135  
Inch and Metric

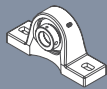


Shaft Diam (in.)	AMI Unit #	List Price	Dimensions (in.)										Bolt Size (in.)	Bearing #	Housing #	Weight (lb.)	
			h	a	e		b	s <sub>1</sub>	s <sub>2</sub>	g	w	L					
					Min.	Max.											
1-7/16	UGAO307-23	272.60	2-1/8	7-9/16	5.713	6.287	2-1/8	0.669	0.787	63/64	4-3/32	2.031	1/2	UG307-23	AO307	5.68	
1-1/2	UGAO308-24	324.50	2-3/8	8-1/2	6.351	7.149	2-13/32	0.787	1.024	1-1/16	4-21/32	2.248	5/8	UG308-24	AO308	8.18	
1-11/16	UGAO309-27	376.10	2-5/8	9-7/16	7.101	7.899	2-41/64	0.787	1.024	1-3/16	5-1/8	2.311	5/8	UG309-27	AO309	10.70	
1-15/16	UGAO310-31	452.80	2-13/16	10-7/16	7.851	8.649	2-61/64	0.787	1.024	1-19/64	5-19/32	2.622	5/8	UG310-31	AO310	14.78	
2-3/16	UGAO311-35	573.00	3-1/16	11-5/16	8.608	9.392	3-9/64	0.906	1.142	1-1/2	6-1/32	2.874	3/4	UG311-35	AO311	18.08	
2-7/16	UGAO312-39	721.60	3-5/16	12-19/64	9.358	10.142	3-5/16	0.906	1.142	1-37/64	6-17/32	3.126	3/4	UG312-39	AO312	22.71	
2-11/16	UGAO314-43	1085.40	3-13/16	14-11/64	10.786	11.714	3-25/32	1.024	1.339	1-13/16	7-9/16	3.626	7/8	UG314-43	AO314	34.88	
2-15/16 3	UGAO315-47 UGAO315-48	1135.10	4-1/8	15-1/8	11.536	12.464	4-1/16	1.024	1.339	1-59/64	8-5/64	3.937	7/8	UG315-47 UG315-48	AO315	43.22	
Dimensions (mm)																	
45	UGAO309	376.10	66.7	240	180	201	67	20	26	30	130	58.7	M16	UG309	AO309	10.70	
50	UGAO310	452.80	71.4	265	199	220	75	20	26	33	142	66.6	M16	UG310	AO310	14.78	
55	UGAO311	573.00	77.8	287	219	239	80	23	29	38	153	73.0	M20	UG311	AO311	18.08	
60	UGAO312	721.60	84.1	312	238	258	84	23	29	40	166	79.4	M20	UG312	AO312	22.71	
70	UGAO314	1085.40	96.8	360	274	298	96	26	34	46	192	92.1	M22	UG314	AO314	34.88	
75	UGAO315	1135.10	104.8	384	293	317	103	26	34	49	205	100.0	M22	UG315	AO315	43.22	

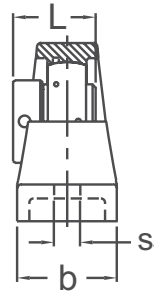
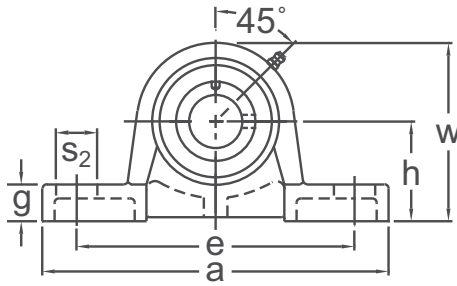
Lubrication fitting tap size 1/8-27 NPT

INTERCHANGES: RAO PLY3-N

HEAVY DUTY



Eccentric Locking  
Wide Inner Ring  
Cast Iron Housing  
Insert detail-pg.135  
Inch and Metric

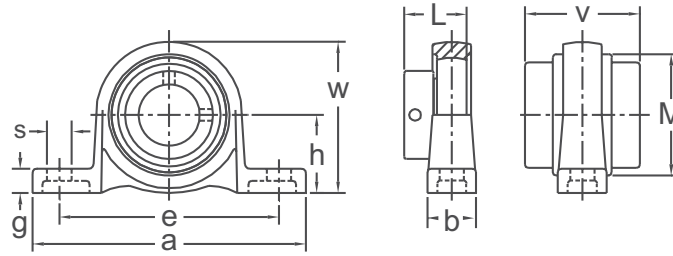
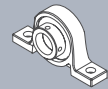


Shaft Diam (in.)	AMI Unit #	List Price	Dimensions (in.)										Bolt Size (in.)	Bearing #	Housing #	Weight (lb.)
			h	a	e		b	s <sub>1</sub>	s <sub>2</sub>	g	w	L				
					Min.	Max.										
1-7/16	UGSAO307-23	298.40	2-3/4	10-5/8	7.789	8.743	2-3/4	0.750	1.102	15/16	4-13/16	2.031	5/8	UG307-23	SAO307	8.04
1-1/2	UGSAO308-24	358.00	3-1/8	11-3/8	8.500	9.532	3-1/8	0.750	1.141	1-3/16	5-45/64	2.248	5/8	UG308-24	SAO308	12.40
1-11/16	UGSAO309-27	416.90	3-1/8	11-3/8	8.500	9.532	3-1/8	0.750	1.141	1-3/16	5-45/64	2.311	5/8	UG309-27	SAO309	12.50
1-15/16	UGSAO310-31	476.40	3-1/8	11-3/8	8.500	9.532	3-1/8	0.750	1.141	1-19/64	5-53/64	2.622	5/8	UG310-31	SAO310	16.11
2-3/16	UGSAO311-35	637.70	3-3/4	12-19/32	9.500	11.000	3-1/2	0.875	1.375	1-13/32	6-45/64	2.874	3/4	UG311-35	SAO311	19.72
2-7/16	UGSAO312-39	796.00	4-1/8	13-3/4	10.625	11.875	4	0.875	1.375	1-1/2	7-21/64	3.126	3/4	UG312-39	SAO312	30.89
2-11/16	UGSAO314-43	1147.10	4-9/16	15-23/64	11.500	12.500	4-3/8	0.984	1.375	1-3/4	8-1/4	3.626	7/8	UG314-43	SAO314	36.51
2-15/16 3	UGSAO315-47 UGSAO315-48	1258.70	4-9/16	15-23/64	11.343	13.375	4-3/8	0.984	1.891	1-57/64	8-45/64	3.937	7/8	UG315-47 UG315-48	SAO315	42.06
Dimensions (mm)																
45	UGSAO309	416.90	79.4	289	216	242	79	19	29	30	145	58.7	M16	UG309	SAO309	10.36
50	UGSAO310	476.40	79.4	289	216	242	79	19	29	33	148	66.6	M16	UG310	SAO310	14.30
55	UGSAO311	637.70	95.2	320	241	279	89	22	35	36	170	73.0	M20	UG311	SAO311	17.53
60	UGSAO312	796.00	104.8	349	270	302	101	22	35	38	186	79.4	M20	UG312	SAO312	20.98
70	UGSAO314	1147.10	115.9	390	292	318	111	25	35	44	210	92.1	M22	UG314	SAO314	26.47
75	UGSAO315	1258.70	115.9	390	288	340	111	25	48	48	221	100.0	M22	UG315	SAO315	32.17

Lubrication fitting tap size 1/8-27 NPT

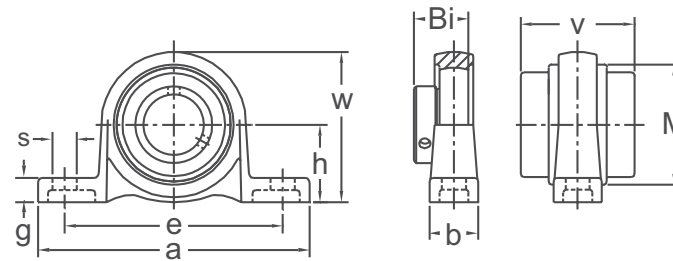
INTERCHANGES: RSAO

HEAVY DUTY



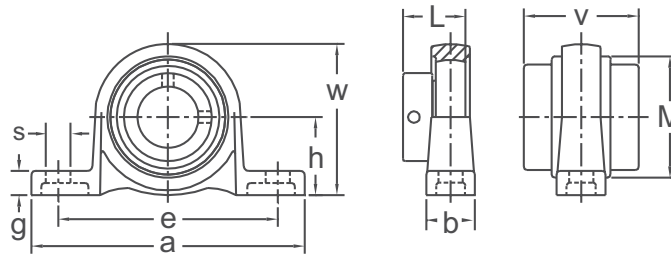
**Eccentric Locking**  
**Extra Narrow Inner Ring**  
**ZDC Alloy Housing**  
**52100 Bearing Steel**  
**Non-Relube**  
**Insert detail-pg.137**  
**Metric**

Shaft Diam. (mm)	AMI Unit #	List Price		Dimensions (mm)										Bolt Size (mm)	Bearing #	Housing #	Weight (lb.)
		No Cover	With Cover C (CE)	h	a	e	b	s	g	w	L	v	M				
10	UP000	41.50	45.65	18	67	53	16	7	6	35	17.5	33	29	M6	U000	P000	0.17
12	UP001	42.50	46.65	19	71	56	16	7	6	38	17.5	33	31		U001	P001	0.20
15	UP002	45.30	49.45	22	80	63	16	7	7	43	18.5	34	35		U002	P002	0.28
17	UP003	48.80	53.05	24	85	67	18	7	7	47	20.5	38	38	M6	U003	P003	0.35
20	UP004	51.80	56.05	28	100	80	20	10	9	55	24.5	46	45	M8	U004	P04-5	0.52
25	UP005	59.40	63.65	32	112	90	20	10	10	62	25.5	47	50	M8	U005	P05-6	0.66
30	UP006	72.20	78.20	36	132	106	26	13	11	70	26.5	50	58	M10	U006	P06-7	1.01



**Set-Screw Locking**  
**Extra Narrow Inner Ring**  
**ZDC Alloy Housing**  
**52100 Bearing Steel**  
**Non-Relube**  
**Insert detail-pg.137**  
**Metric**

Shaft Diam. (mm)	AMI Unit #	List Price		Dimensions (mm)										Bolt Size (mm)	Bearing #	Housing #	Weight (lb.)
		No Cover	With Cover C (CE)	h	a	e	b	s	g	w	Bi	v	M				
10	KP000	41.50	45.65	18	67	53	16	7	6	35	14	33	29	M6	K000	P000	0.17
12	KP001	45.30	49.45	19	71	56	16	7	6	38	14.5	33	31		K001	P001	0.20
15	KP002	48.60	52.75	22	80	63	16	7	7	43	16.5	34	35		K002	P002	0.28
17	KP003	52.95	57.25	24	85	67	18	7	7	47	17.5	38	38	M6	K003	P003	0.35
20	KP004	60.60	64.75	28	100	80	20	10	9	55	21	46	45	M8	K004	P04-5	0.52
25	KP005	69.80	74.00	32	112	90	20	10	10	62	22.5	47	50	M8	K005	P05-6	0.66
30	KP006	83.00	89.00	36	132	106	26	13	11	70	24.5	50	58	M10	K006	P06-7	1.01



**Eccentric Locking**  
**Extra Narrow Inner Ring**  
**ZDC Alloy with Electroless Chromate Finish Housing**  
**440C Stainless Steel Bearing**  
**Non-Relube**  
**Insert detail-pg.137**  
**Metric**

Shaft Diam. (mm)	AMI Unit #	List Price		Dimensions (mm)										Bolt Size (mm)	Bearing #	Housing #	Weight (lb.)
		No Cover	With Cover C (CE)	h	a	e	b	s	g	w	L	v	M				
10	MUP000	98.75	102.30	18	67	53	16	7	6	35	17.5	33	29	M6	MU000	P000Z3	0.17
12	MUP001	103.60	106.90	19	71	56	16	7	6	38	17.5	33	31		MU001	P001Z3	0.20
15	MUP002	105.25	109.40	22	80	63	16	7	7	43	18.5	34	35		MU002	P002Z3	0.28
17	MUP003	120.70	125.10	24	85	67	18	7	7	47	20.5	38	38	M6	MU003	P003Z3	0.35
20	MUP004	131.80	135.30	28	100	80	20	10	9	55	24.5	46	45	M8	MU004	P04-5Z3	0.52
25	MUP005	147.75	151.50	32	112	90	20	10	10	62	25.5	47	50	M8	MU005	P05-6Z3	0.66
30	MUP006	194.60	200.70	36	132	106	26	13	11	70	26.5	50	58	M10	MU006	P06-7Z3	1.01

SILVER SERIES