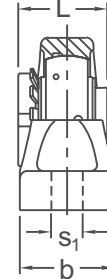
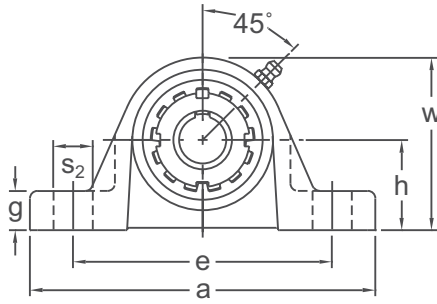




NORMAL DUTY



Tapered Adapter Sleeve
Wide Inner Ring
Cast Iron Housing
Insert Detail-pg.128
Inch and Metric

Shaft Diam. (in.)	AMI Unit #	List Price	Dimensions (in.)										Bolt Size (in.)	Bearing #	Housing #	Weight (lb.)
			h	a	e		b	s ₁	s ₂	g	w	L				
					Min.	Max.										
3/4 13/16	UKP205+HE2305 UKP205+HA2305	87.10	1-7/16	5-1/2	3-3/4	4-1/2	1-1/2	1/2	3/4	5/8	2-3/4	1.378	3/8	UK205+HE2305 UK205+HA2305	P205T	1.85
7/8 15/16 1	UKP206+HS2306 UKP206+HA2306 UKP206+HE2306	106.50	1-11/16	6-1/2	4-7/16	5-1/16	1-7/8	21/32	13/16	23/32	3-9/32	1.496	1/2	UK206+HS2306 UK206+HA2306 UK206+HE2306	P206T	3.09
1-1/8 1-3/16	UKP207+HS2307 UKP207+HA2307	121.70	1-7/8	6-9/16	4-11/16	5-5/16	1-7/8	21/32	13/16	3/4	3-11/16	1.693	1/2	UK207+HS2307 UK207+HA2307	P207T	3.53
1-1/4 1-5/16 1-3/8	UKP208+HE2308 UKP208+HA2308 UKP208+HS2308	141.60	1-15/16	7-1/4	4-7/8	5-7/8	2-1/8	21/32	1	3/4	3-15/16	1.811	1/2	UK208+HE2308 UK208+HA2308 UK208+HS2308	P208T	4.63
1-7/16 1-1/2 1-5/8	UKP209+HA2309 UKP209+HE2309 UKP209+HS2309	152.40	2-1/8	7-1/2	5-3/8	6-1/8	2-1/8	21/32	7/8	25/32	4-1/4	1.969	1/2	UK209+HA2309 UK209+HE2309 UK209+HS2309	P209T	5.29
1-11/16 1-3/4	UKP210+HA2310 UKP210+HE2310	176.90	2-1/4	8-1/8	5-7/8	6-5/8	2-3/8	25/32	1	7/8	4-1/2	2.165	5/8	UK210+HA2310 UK210+HE2310	P210T	6.17
1-7/8 1-15/16 2	UKP211+HS2311 UKP211+HA2311 UKP211+HE2311	234.50	2-1/2	8-5/8	6-3/8	7-1/8	2-3/8	25/32	1	7/8	4-31/32	2.323	5/8	UK211+HS2311 UK211+HA2311 UK211+HE2311	P211T	7.49
2-1/16 2-1/8	UKP212+HA2312 UKP212+HS2312	290.00	2-3/4	9-1/2	6-7/8	7-5/8	2-3/4	25/32	1	1	5-7/16	2.441	5/8	UK212+HA2312 UK212+HS2312	P212T	10.58
2-3/16 2-1/4 2-3/8	UKP213+HA2313 UKP213+HE2313 UKP213+HS2313	317.50	3	10-7/16	7-19/32	8-13/32	2-3/4	1	1-5/32	1-1/16	5-29/32	2.559	3/4	UK213+HA2313 UK213+HE2313 UK213+HS2313	P213T	12.56
2-7/16 2-1/2	UKP215+HA2315 UKP215+HE2315	513.50	3-1/4	10-13/16	8-1/32	8-31/32	2-15/16	1	1-7/32	1-3/32	6-13/32	2.874	3/4	UK215+HA2315 UK215+HE2315	P215T	18.29
2-3/4	UKP216+HE2316	522.80	3-1/2	11-1/2	8-21/32	9-19/32	3-1/16	1	1-7/32	1-3/16	6-7/8	3.071	3/4	UK216+HE2316	P216T	22.92
2-15/16 3	UKP217+HA2317 UKP217+HE2317	629.40	3-3/4	12-3/16	9-9/32	10-7/32	3-1/4	1	1-7/32	1-1/4	7-3/8	3.228	3/4	UK217+HA2317 UK217+HE2317	P217T	28.21
3-1/8	UKP218+HS2318	774.80	4	12-7/8	9-13/16	10-11/16	3-1/2	1-1/16	1-5/16	1-11/32	7-7/8	3.386	7/8	UK218+HS2318	P218T	33.28
Dimensions (mm)																
20	UKP205+H2305	87.10	36.5	140	95	114	38	13	19	16	70	35	M10	UK205+H2305	P205T	1.85
25	UKP206+H2306	106.50	42.9	165	113	129	48	17	21	18	83	38	M14	UK206+H2306	P206T	3.09
30	UKP207+H2307	121.70	47.6	167	119	135	48	17	21	19	94	43	M14	UK207+H2307	P207T	3.53
35	UKP208+H2308	141.60	49.2	184	124	149	54	17	25	19	100	46	M14	UK208+H2308	P208T	4.63
40	UKP209+H2309	152.40	54	190	137	156	54	17	22	20	108	50	M14	UK209+H2309	P209T	5.29
45	UKP210+H2310	176.90	57.2	206	149	168	60	20	25	22	114	55	M16	UK210+H2310	P210T	6.17
50	UKP211+H2311	234.50	63.5	219	162	181	60	20	25	22	126	59	M16	UK211+H2311	P211T	7.49
55	UKP212+H2312	290.00	69.8	241	175	194	70	20	25	25	138	62	M16	UK212+H2312	P212T	10.58
60	UKP213+H2313	317.50	76.2	265	193	214	70	25	29	27	150	65	M20	UK213+H2313	P213T	12.56
65	UKP215+H2315	513.50	82.6	275	204	228	74	25	31	28	163	73		UK215+H2315	P215T	18.29
70	UKP216+H2316	522.80	88.9	292	220	244	78	25	31	30	175	78	M20	UK216+H2316	P216T	22.92
75	UKP217+H2317	629.40	95.2	310	236	260	83	25	31	32	187	82		UK217+H2317	P217T	28.21
80	UKP218+H2318	774.80	101.6	327	249	272	88	27	33	34	200	86	M22	UK218+H2318	P218T	33.28

Lubrication fitting tap size for 1" and smaller shaft sizes, 1/4-28 UNF; for all other sizes, 1/8-27 NPT

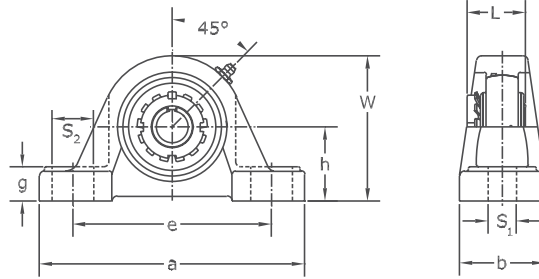
INTERCHANGES: UKP



PILLOW BLOCKS

UKPX 00+H

**Tapered Adapter Sleeve
Wide Inner Ring
Cast Iron Housing
Insert detail-pg.132
Inch and Metric**

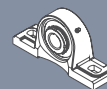


MEDIUM DUTY

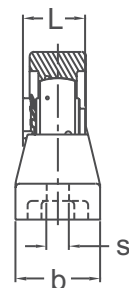
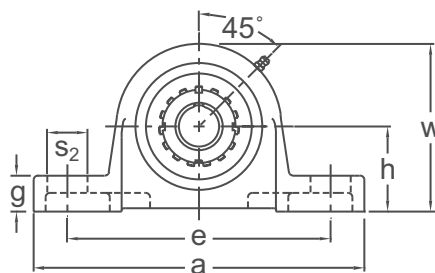
Shaft Diam. (in.)	AMI Unit #	List Price	Dimensions (in.)										Bolt Size (in.)	Bearing #	Housing #	Weight (lb.)			
			h	a	e		b	s1	s2	g	w	L							
					Min.	Max.													
3/4	UKPX05+HE2305	119.40	1-3/4	6-1/4	4-3/16	5-3/16	2	21/32	1	23/32	3-7/16	1.378	1/2	UKX05+HE2305	PX05	3.35			
13/16	UKPX05+HA2305																		UKX05+HA2305
7/8	UKPX06+HS2306	136.80	1-7/8	6-7/8	4-1/2	5-1/2	2-1/4	21/32	1	25/32	3-13/16	1.496	1/2	UKX06+HS2306	PX06	4.46			
15/16	UKPX06+HA2306																		UKX06+HA2306
1	UKPX06+HE2306																		UKX06+HE2306
1-1/8	UKPX07+HS2307	164.10	2-1/8	8	5	6-3/8	2-1/4	21/32	1-3/16	7/8	4-1/4	1.693	1/2	UKX07+HS2307	PX07	6.02			
1-3/16	UKPX07+HA2307																		UKX07+HA2307
1-1/4	UKPX08+HE2308	192.05	2-5/16	8-3/4	5-1/2	6-3/4	2-5/8	25/32	1-1/4	1-1/32	4-17/32	1.811	5/8	UKX08+HE2308	PX08	7.81			
1-5/16	UKPX08+HA2308																		UKX08+HA2308
1-3/8	UKPX08+HS2308																		UKX08+HS2308
1-7/16	UKPX09+HA2309	211.30	2-5/16	8-3/4	5-7/16	6-13/16	2-5/8	25/32	1-5/16	1-1/32	4-39/64	1.969	5/8	UKX09+HA2309	PX09	7.81			
1-1/2	UKPX09+HE2309																		UKX09+HE2309
1-5/8	UKPX09+HS2309																		UKX09+HS2309
1-11/16	UKPX10+HA2310	250.90	2-1/2	9-9/16	5-15/16	7-9/16	2-7/8	25/32	1-7/16	1-1/8	4-31/32	2.165	5/8	UKX10+HA2310	PX10	9.59			
1-3/4	UKPX10+HE2310																		UKX10+HE2310
1-7/8	UKPX11+HS2311	323.65	2-3/4	10-1/4	6-9/16	7-15/16	3-1/8	1	1-7/16	1-3/16	5-9/16	2.323	3/4	UKX11+HS2311	PX11	13			
1-15/16	UKPX11+HA2311																		UKX11+HA2311
2	UKPX11+HE2311																		UKX11+HE2311
2-1/16	UKPX12+HA2312	382.50	3	11-1/4	7-1/8	8-7/8	3-1/4	1	1-5/8	1-5/16	6-7/64	2.441	3/4	UKX12+HA2312	PX12	15.9			
2-1/8	UKPX12+HS2312																		UKX12+HS2312
2-3/16	UKPX13+HA2313	441.05	3	11-1/4	7-1/8	8-7/8	3-1/4	13/16	1-5/8	1-5/16	6-7/64	2.559	3/4	UKX13+HA2313	PX13	16.1			
2-1/4	UKPX13+HE2313																		UKX13+HE2313
2-3/8	UKPX13+HS2313																		UKX13+HS2313
2-7/16	UKPX15+HA2315	606.10	3-1/2	13	7-7/8	10-1/8	3-1/2	1-1/16	2	1-5/16	6-31/32	2.874	7/8	UKX15+HA2315	PX15	25.7			
2-1/2	UKPX15+HE2315																		UKX15+HE2315
2-3/4	UKPX16+HE2316	790.45	4	15	9-11/16	12-9/16	4	1-1/16	2-5/16	1-21/32	8	3.071	7/8	UKX16+HE2316	PX16	38.8			
2-15/16	UKPX17+HA2317	850.25	4	15	9-11/16	12-9/16	4-3/8	1-1/16	2-5/16	1-21/32	8-7/32	3.228	7/8	UKX17+HA2317	PX17	38			
3	UKPX17+HE2317																		UKX17+HE2317
3-1/8	UKPX18+HS2318	1102.65	4	15	9-5/8	12-5/8	4-3/8	1-1/16	2-3/8	1-25/32	8-1/8	3.836	7/8	UKX18+HS2318	PX18	37.3			
3-7/16	UKPX20+HA2320	1473.05	5	17	11-3/4	14-3/4	4-3/4	1-5/16	2-1/2	2-1/16	10	3.819	1	UKX20+HA2320	PX20	72.6			
3-1/2	UKPX20+HE2320																		UKX20+HE2320
Dimensions (mm)																			
20	UKPX05+H2305	119.40	44.4	159	106	132	51	17	25	18	87	35	M14	UKX05+H2305	PX05	3.35			
25	UKPX06+H2306	136.80	47.6	175	114	140	57	17	25	20	97	38		UKX06+H2306	PX06	4.46			
30	UKPX07+H2307	164.10	54	203	127	162	57	17	30	22	108	43		UKX07+H2307	PX07	6.02			
35	UKPX08+H2308	192.45	58.7	222	140	172	66	20	32	26	115	46	M16	UKX08+H2308	PX08	7.81			
40	UKPX09+H2309	211.30	58.7	222	138	173	66	20	33	26	117	50		UKX09+H2309	PX09	7.81			
45	UKPX10+H2310	250.90	63.5	243	151	192	74	20	36	29	126	55		UKX10+H2310	PX10	9.59			
50	UKPX11+H2311	323.65	69.8	260	167	202	79	25	36	30	141	59	M20	UKX11+H2311	PX11	13.0			
55	UKPX12+H2312	382.50	76.2	286	181	225	82	25	41	33	155	62		UKX12+H2312	PX12	15.9			
60	UKPX13+H2313	441.05	76.2	286	181	225	82	21	41	33	155	65		UKX13+H2313	PX13	16.1			
65	UKPX15+H2315	606.10	88.9	330	200	257	89	27	51	33	177	73	M22	UKX15+H2315	PX15	25.7			
70	UKPX16+H2316	790.45	101.6	381	246	319	102	27	59	42	203	78		UKX16+H2316	PX16	38.8			
75	UKPX17+H2317	850.25	101.6	381	246	319	111	27	59	42	209	82		UKX17+H2317	PX17	38.0			
80	UKPX18+H2318	1102.65	101.6	381	245	321	111	27	60	45	206	86	M22	UKX18+H2318	PX18	37.3			
90	UKPX20+H2320	1473.05	127	432	299	375	121	33	64	52	254	97		UKX20+H2320	PX20	69.4			

Lubrication fitting tap size 1/8-27 NPT

INTERCHANGES: UKPX



Tapered Adapter Sleeve
Wide Inner Ring
Cast Iron Housing
Insert detail-pg.136
Inch

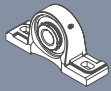


HEAVY DUTY

Shaft Diam (in.)	AMI Unit #	List Price	Dimensions (in.)										Bolt Size (in.)	Bearing #	Housing #	Weight (lb.)	
			h	a	e		b	s ₁	s ₂	g	w	L					
					Min.	Max.											
7/8	UKPU306+HS2306	235.70	2-1/8	8-1/4	5-7/8	7	2.250	0.551	1.063	15/16	4.250	1.496	1/2	UK306+HS2306	P-U306	6.4	
15/16	UKPU306+HA2306													UK306+HA2306			
1	UKPU306+HE2306													UK306+HE2306			
1-1/8	UKPU307+HS2307	252.05	2-3/8	9-1/4	6-47/64	7-63/64	2.362	0.625	1.125	1	4.685	1.693	9/16	UK307+HS2307	P-U307	7.8	
1-3/16	UKPU307+HA2307													UK307+HA2307			
1-7/16	UKPU309+HA2309	349.05	2-7/8	10-1/4	7-5/8	8-7/8	3.000	0.625	1.125	1-5/16	5.625	1.969	9/16	UK309+HA2309	P-U309	12.4	
1-1/2	UKPU309+HE2309													UK309+HE2309		12.2	
1-5/8	UKPU309+HS2309													UK309+HS2309		12.0	
1-11/16	UKPU310+HA2310	412.85	3-1/8	11-9/64	8-17/64	9-33/64	3.150	0.625	1.125	1-3/8	6.219	2.165	9/16	UK310+HA2310	P-U310	16.0	
1-3/4	UKPU310+HE2310													UK310+HE2310		15.8	
1-7/8	UKPU311+HS2311	520.60	3-1/2	12-41/64	9-49/64	10-49/64	3.386	0.787	1.250	1-1/2	6.811	2.323	3/4	UK311+HS2311	P-U311	20.6	
1-15/16	UKPU311+HA2311													UK311+HA2311		20.8	
2	UKPU311+HE2311													UK311+HE2311		20.6	
2-1/16	UKPU312+HA2312	632.05	3-5/8	13-3/4	10-5/8	11-7/8	3.500	0.787	1.375	1-5/8	7.197	2.441	3/4	UK312+HA2312	P-U312	26.4	
2-1/8	UKPU312+HS2312													UK312+HS2312		26.2	
2-7/16	UKPU315+HA2315	1091.45	4-1/4	15-1/8	11-1/4	12-3/4	4.000	1.024	1.654	1-3/4	8.295	2.874	7/8	UK315+HA2315	P-U315	38.8	
2-1/2	UKPU315+HE2315													UK315+HE2315		38.6	
3-7/16	UKPU320+HA2320	2977.95	5-11/16	17-21/64	14	15	5.000	1.063	1.500	2-9/16	11.063	3.819	1	UK320+HA2320	P-U320	79.2	
3-1/2	UKPU320+HE2320													UK320+HE2320		79.0	

Lubrication fitting tap size 1/8-27 NPT

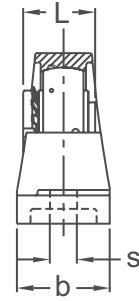
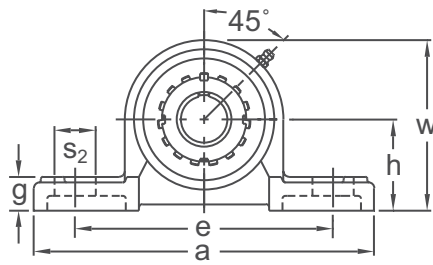
INTERCHANGES: P-U3K



PILLOW BLOCKS

UKP 300+H

Tapered Adapter Sleeve
Wide Inner Ring
Cast Iron Housing
Insert detail-pg.136
Inch and Metric



Shaft Diam (in.)	AMI Unit #	List Price	Dimensions (in.)										Bolt Size (in.)	Bearing #	Housing #	Weight (lb.)	
			h	a	e		b	s ₁	s ₂	g	w	L					
					Min.	Max.											
3/4	UKP305+HE2305	166.20	1-49/64	6-7/8	4-31/32	5-17/32	1-3/4	21/32	25/32	43/64	3-1/4	1.378	1/2	UK305+HE2305	P305	3.57	
7/8	UKP306+HS2306	204.50	1-31/32	7-1/16	5-7/32	5-25/32	2	21/32	25/32	7/8	3-11/16	1.496	1/2	UK306+HS2306	P306	4.24	
15/16	UKP306+HA2306													UK306+HA2306			
1	UKP306+HE2306																
1-1/8	UKP307+HS2307	242.00	2-13/64	8-1/4	5-3/4	6-3/4	2-1/4	21/32	1	7/8	4-1/8	1.693	1/2	UK307+HS2307	P307	6.02	
1-3/16	UKP307+HA2307													UK307+HA2307			
1-1/4	UKP308+HE2308	287.00	2-23/64	8-11/16	6-3/16	7-5/16	2-3/8	21/32	1-1/16	63/64	4-9/16	1.811	1/2	UK308+HE2308	P308	6.69	
1-5/16	UKP308+HA2308													UK308+HA2308			
1-3/8	UKP308+HS2308													UK308+HS2308			
1-7/16	UKP309+HA2309	356.70	2-41/64	9-5/8	6-15/16	8-1/16	2-5/8	25/32	1-3/16	1	5-1/32	1.969	5/8	UK309+HA2309	P309	10.30	
1-1/2	UKP309+HE2309													UK309+HE2309			
1-5/8	UKP309+HS2309													UK309+HS2309			
1-11/16	UKP310+HA2310	455.40	2-61/64	10-13/16	7-5/8	9-1/8	3-1/16	25/32	1-3/8	1-3/16	5-5/8	2.165	5/8	UK310+HA2310	P310	13.90	
1-3/4	UKP310+HE2310													UK310+HE2310			
1-7/8	UKP311+HS2311	565.50	3-5/32	12-3/16	8-3/8	10-1/8	3-1/8	25/32	1-1/2	1-7/32	6-1/16	2.323	5/8	UK311+HS2311	P311	17.70	
1-15/16	UKP311+HA2311													UK311+HA2311			
2	UKP311+HE2311													UK311+HE2311			
2-1/16	UKP312+HA2312	671.00	3-11/32	13-5/32	9-1/8	10-5/8	3-3/8	1	1-1/2	1-27/64	6-1/2	2.441	3/4	UK312+HA2312	P312	20.80	
2-1/8	UKP312+HS2312													UK312+HS2312			
2-3/16	UKP313+HA2313	762.00	3-35/64	13-3/8	9-1/2	11	3-1/2	1	1-1/2	1-37/64	6-27/32	2.559	3/4	UK313+HA2313	P313	21.90	
2-1/4	UKP313+HE2313													UK313+HE2313			
2-3/8	UKP313+HS2313													UK313+HS2313			
2-7/16	UKP315+HA2315	1065.00	3-15/16	15-5/64	10-11/16	12-1/16	3-7/8	1-1/16	1-9/16	1-37/64	7-59/64	2.874	7/8	UK315+HA2315	P315	30.60	
2-1/2	UKP315+HE2315													UK315+HE2315			
2-11/16	UKP316+HA2316	1225.00	4-11/64	15-3/4	11-1/16	12-7/16	4-3/8	1-1/16	1-9/16	1-25/32	8-7/32	3.071	7/8	UK316+HA2316	P316	37.10	
2-3/4	UKP316+HE2316													UK316+HE2316			
2-15/16	UKP317+HA2317	1480.00	4-13/32	16-9/16	11-27/32	13-13/32	4-3/8	1-5/16	1-25/32	1-45/64	8-11/16	3.228	1	UK317+HA2317	P317	41.50	
3	UKP317+HE2317													UK317+HE2317			
3-1/8	UKP318+HS2318	1634.00	4-41/64	16-15/16	12-7/32	13-25/32	4-3/8	1-5/16	1-45/64	1-31/32	9-1/4	3.386	1	UK318+HS2318	P318	47.10	
3-3/16	UKP318+HA2318													UK318+HA2318			
3-1/4	UKP319+HE2319	2015.00	4-59/64	18-1/2	13-19/32	14-31/32	4-3/4	1-1/2	1-31/32	2-3/64	10	3.543	1-1/8	UK319+HE2319	P319	59.10	
3-7/16	UKP320+HA2320	2350.00	5-33/64	19-5/16	14-5/32	15-27/32	4-3/4	1-13/32	1-31/32	2-11/64	10-29/32	3.819	1-1/8	UK320+HA2320	P320	76.50	
3-1/2	UKP320+HE2320													UK320+HE2320			
4	UKP322+HE2322	3178.00	5-29/32	20-11/16	14-7/8	16-5/8	5-1/2	1-9/16	2-5/32	2-1/4	11-45/64	4.134	1-1/4	UK322+HE2322	P322	95.00	
Dimensions (mm)																	
20	UKP305+H2305	166.20	45	175	126	141	45	17	20	17	83	35		UK305+H2305	P305	3.57	
25	UKP306+H2306	204.50	50	180	133	147	50	17	20	22	94	38	M14	UK306+H2306	P306	4.24	
30	UKP307+H2307	242.00	56	210	146	172	56	17	25	22	105	43		UK307+H2307	P307	6.02	
35	UKP308+H2308	287.00	60	220	157	186	60	17	27	25	116	46	M14	UK308+H2308	P308	6.69	
40	UKP309+H2309	356.70	67	245	176	205	67	20	30	26	128	50	M16	UK309+H2309	P309	10.3	
45	UKP310+H2310	455.40	75	275	194	232	78	20	35	30	143	55	M16	UK310+H2310	P310	13.9	
50	UKP311+H2311	565.50	80	310	213	257	80	20	38	31	154	59	M16	UK311+H2311	P311	17.7	
55	UKP312+H2312	671.00	85	334	232	270	85	25	38	36	165	62	M20	UK312+H2312	P312	20.8	
60	UKP313+H2313	762.00	90	340	241	279	90	25	38	40	174	65	M20	UK313+H2313	P313	21.9	
65	UKP315+H2315	1065.00	100	383	272	306	100	27	40	40	201	73	M22	UK315+H2315	P315	30.6	
70	UKP316+H2316	1225.00	106	400	281	316	110	27	40	45	209	78	M22	UK316+H2316	P316	37.1	
75	UKP317+H2317	1480.00	112	420	301	341	110	33	45	43	221	82	M27	UK317+H2317	P317	41.5	
80	UKP318+H2318	1634.00	118	430	310	350	110	33	43	50	235	86	M27	UK318+H2318	P318	47.1	
85	UKP319+H2319	2015.00	125	470	337	380	120	38	50	52	255	90	M30	UK319+H2319	P319	59.1	
90	UKP320+H2320	2350.00	140	490	360	402	120	36	50	55	277	97	M30	UK320+H2320	P320	76.5	
100	UKP322+H2322	3178.00	150	525	378	422	140	40	55	57	297	105		UK322+H2322	P322	95.0	
110	UKP324+H2324	4122.00	160	565	428	472	140	40	55	67	320	112	M33	UK324+H2324	P324	118.2	
115	UKP326+H2326	5430.00	180	600	458	502	140	40	55	80	355	121		UK326+H2326	P326	161.5	
125	UKP328+H2328	6695.00	200	615	478	522	140	40	55	80	390	131	M33	UK328+H2328	P328	199.4	

Lubrication fitting tap size 1/8-27 NPT

INTERCHANGES: UKP3

Ph: 800-882-8642 • Fax: 847-759-0630

AMI Bearings, Inc. 105

HEAVY DUTY