



P.O. Box 1190 - 40 Lamplighter St. Oak Hill, WV 25901
 Phone: (304) 465-3295 / Fax: (304)-465-8576

HIGHLAND'S 280 VFD SCOOP

Dimensions

- Overall Length 28 ft. - 11 in. (Including Bucket)
- Machine Width 9 ft. - 7 in.
- Frame Height 25 in.
- Ground Clearance 8 in. (35" Tires)
- Steering Angle 80° Total
- Approx. Machine Weight 43,000 lb. (Including Batteries)
- Maximum Payload 61,000 lb.
- Maximum Breakout Load 32,000 lb.
- Bucket Capacity 140 cu ft

Specifications

- Tram Motors 74 hp.
- Pump Motor 45 hp.
- Battery 240 Volt or 128 Volt Lead Acid
6 Hour Run Time, 6 Hour Charge

Tire Options

- 35x15-15 Tires (Customer Specified Brand and Fill)
- 38x16-15 Tires (Customer Specified Brand and Fill)

Standard Features

- Heavy Duty Frame
- Heavy Duty Ball Bearing Center Section
- Heavy Duty Ground Base Battery Lifts
- Easy Access Pump Motor Compartment
- LED lights
- John Deere, Planetary, Four Wheel Drive Axles
- Traction Reducer with Integrated Wet Brake
- Heavy Duty Hydraulic Cylinders

Options

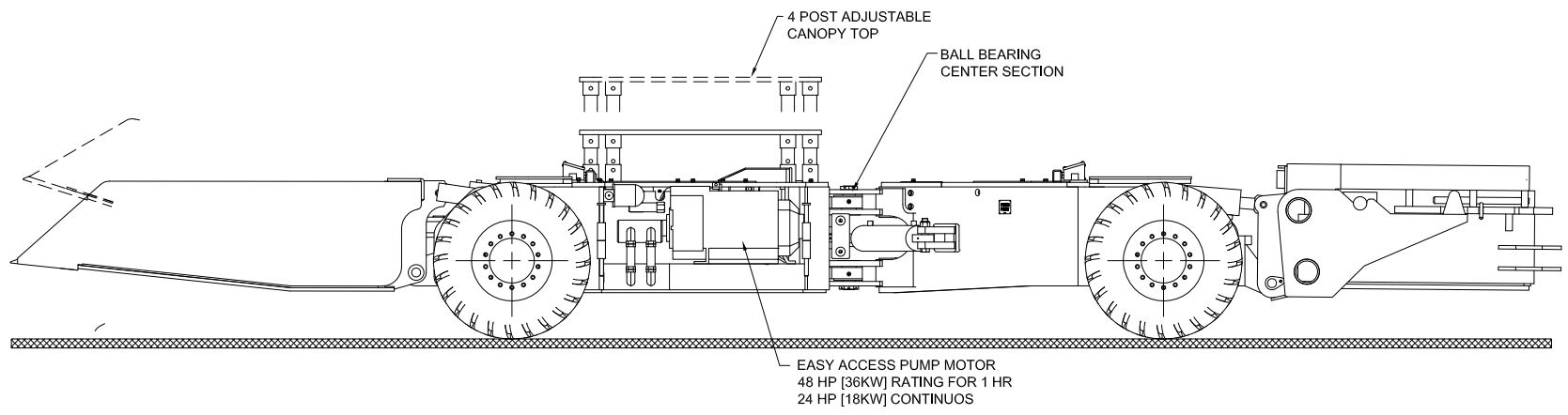
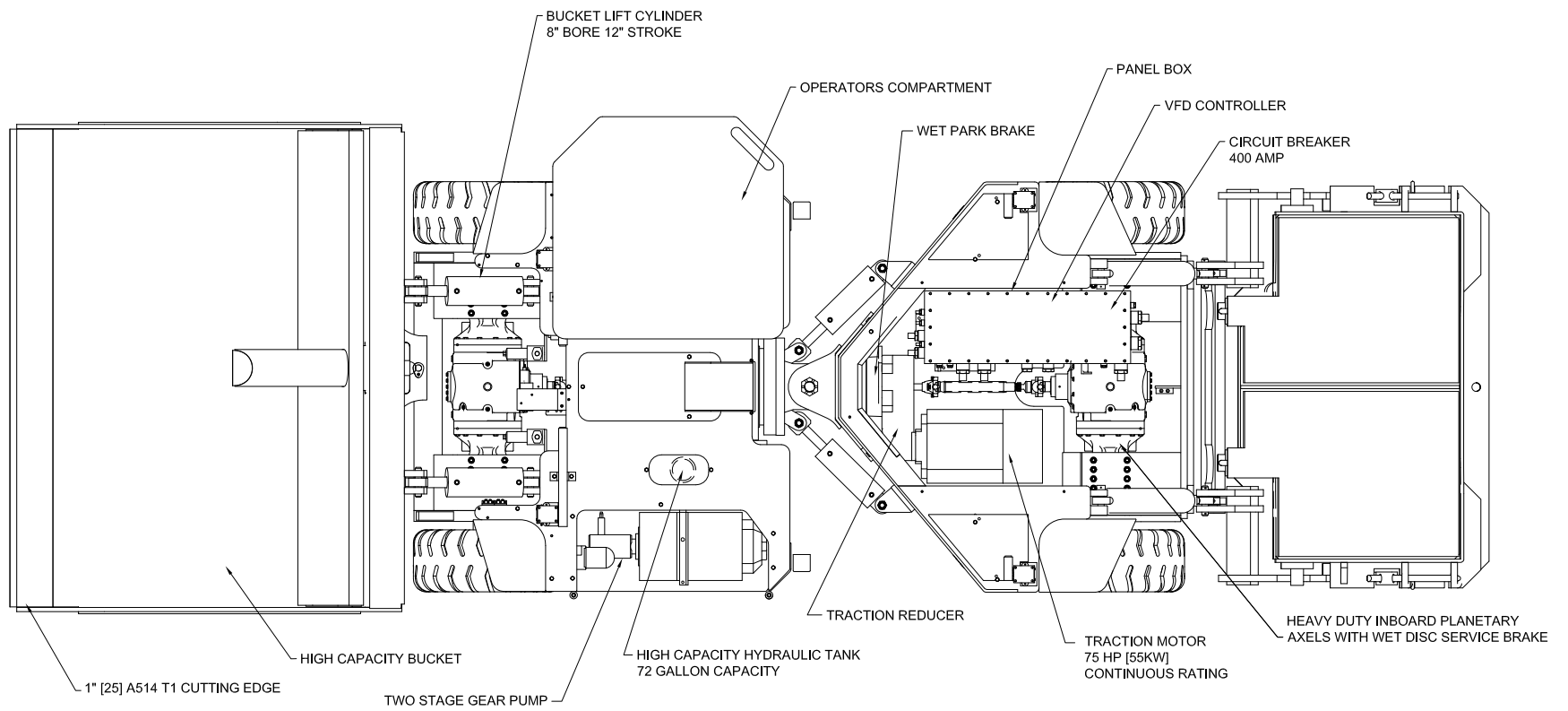
- Hydraulic Winch
- Camera System
- Proximity System

Warranty

- Components 6 - Months
- Electrical Panel 1 - Year
- Frame 2 - Year

Highland offers the latest updates and custom modifications to meet your mining requirements.





280

BATTERY POWERED VFD SCOOPS



HIGHLAND-IND.COM